



**KIPP:LA**  
PUBLIC SCHOOLS  
2017-18 IMPACT REPORT

15 YEARS OF PROVING  
**THE POSSIBLE**

**"I view KIPP LA as a living organism, and I look forward to being a part of its continuous evolution and maturation as it grows, much like the children we educate."**

**ANDY HAHN**

KIPP LA PREP VISUAL ARTS TEACHER SINCE 2006  
FOUNDER OF MUSEUM OF KIPP ART (MOKA)



*For the past 12 years MOKA has helped fund KIPP LA's visual arts programs.*

# WHY INVEST IN KIPP LA'S MISSION & VISION

The 2018-19 school year marks 15 years of KIPP in Los Angeles. As I reflect on this important milestone, I am humbled by the immense strides KIPP LA has made in maturing as an organization, providing excellent education, and preparing for future impact.

As a learning organization, we strive to continuously develop our strengths and identify opportunity areas. This past year, strategic investments were made in curriculum, teaching and learning, human capital, student social and emotional well-being, family and community engagement, advocacy, facilities, leadership development, organizational diversity, and infrastructure. We will maintain our process of measurement, reflection, and planning as we continue to grow.

Fifteen years ago, in 2003, only two KIPP schools were operating in Los Angeles - KIPP Academy of Opportunity and KIPP LA Prep. Today, KIPP LA operates 17 schools throughout greater Los Angeles educating nearly 7,300 students and supporting 2,700 alumni to and through college. This year, we expanded outside of Los Angeles Unified School District for the first time to open KIPP Compton Community School. By August 2020, KIPP LA will grow to operate 20 schools in educationally under-resourced communities. We expect to educate over 9,000 students and support more than 4,000 alumni so they may lead choice-filled lives.

Additionally, our college matriculation rates continue to improve with each cohort. Currently, 86 percent of KIPP LA eighth-grade completers have matriculated to college - higher than the national average of 66 percent

and nearly double the rate for students from low-income communities at 46 percent. KIPP LA alumni are attending prestigious colleges and universities across the country including Duke, Georgetown, Penn, MIT, Stanford, Spelman, Howard, Berkeley, USC, and UCLA among many others. We are proud to have a number of alumni return to KIPP LA as teachers, counselors, and team members after graduation.

Even with these successes, there is still much work to be done as there are nearly 950,000 students attending low-performing schools across Southern California. We believe that we are uniquely positioned to grow beyond 20 schools and help meet students' needs given the strength of our outcomes, continued dedication to excellence for our students, ability to adapt to the needs of students and communities, and the generosity of our supporters.

I am so grateful for your enduring commitment to the children of Southern California. The impact displayed throughout this report is only made possible with your partnership. I hope you will continue to invest in our students' futures in the years to come.

Together we are proving the possible in public education.

With gratitude,



MARCIA AARON  
CHIEF EXECUTIVE OFFICER  
KIPP LA PUBLIC SCHOOLS



For the past 15 years, KIPP LA has prepared students in the educationally under-resourced communities of greater Los Angeles for success in school, college, and life.

## STUDENT COMMUNITY

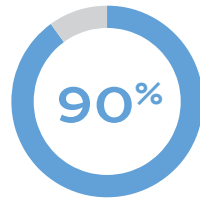
80% LATINX



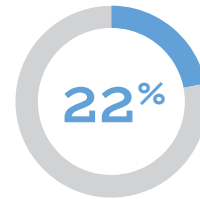
18% BLACK



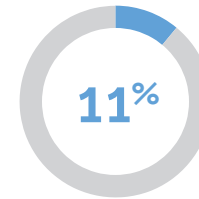
2% OTHER



Of Students Are Eligible For Free or Reduced-Price Meals



Of Students Are English Language Learners



Of Students Receive Special Education Services

## WE EDUCATE



7,300  
STUDENTS

## WE SUPPORT



2,700  
ALUMNI

## WE OPERATE



17  
SCHOOLS

IN GREATER LOS ANGELES

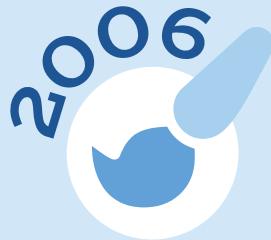
# 15 YEARS OF LEARNING & GROWING

Over the past fifteen years, KIPP LA has evolved along its path to better meet the needs of students, families, and communities. By learning from our experiences, we have celebrated some momentous achievements in proving the possible.



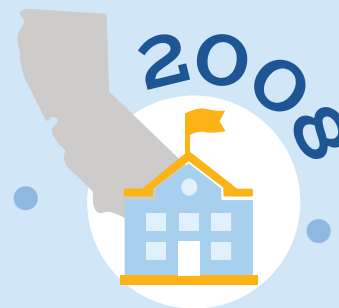
## FIRST KIPP SCHOOLS IN LOS ANGELES KIPP ACADEMY OF OPPORTUNITY & KIPP LA PREP

*KIPP comes to Los Angeles nine years after its founding in Houston.*



## FIRST MOKA EVENT MUSEUM OF KIPP ART

*A dedicated teacher plans and executes MOKA to help fund KIPP LA's visual arts programs and allow student artists a platform to shine. It has since become a signature KIPP LA event.*



## FIRST KIPP ELEMENTARY SCHOOL IN CALIFORNIA KIPP RAÍCES ACADEMY

*Upon discovering the importance of a strong educational foundation for our communities, KIPP LA opens the first KIPP elementary school in California.*



## FIRST CLASS OF KIPP ALUMNI ATTEND COLLEGE



## KIPP LA'S FIRST CALIFORNIA DISTINGUISHED SCHOOLS AWARD KIPP LA PREP



## KIPP THROUGH COLLEGE PROGRAM FORMED

*Building on the lessons learned from KIPP regions with college-aged alumni, an emphasis is placed on supporting alumni not only to college, but in persisting through college.*

2013



**FIRST KIPP LA ALUMNUS  
ATTENDS AN IVY LEAGUE UNIVERSITY**  
DARTMOUTH COLLEGE  
ROBERTO LOPEZ, KIPP LA PREP ALUMNUS

2018



**FIRST KIPP LA SCHOOL  
OUTSIDE LAUSD**  
KIPP COMPTON  
COMMUNITY SCHOOL



**OF KIPP IN LA**

2015



**KIPP LA RECEIVES FIRST  
BLUE RIBBON SCHOOLS AWARD**  
KIPP RAÍCES ACADEMY

*KIPP LA receives first National Blue Ribbon Schools Award. This award is given by the U.S. Department of Education for academic excellence.*



**FIRST CLASS OF  
KIPP LA ALUMNI  
GRADUATE COLLEGE**



**KIPP LA FAMILY AMBASSADOR  
PROGRAM FORMED**

*After realizing the power of family advocacy during KIPP LA's expansion efforts in Huntington Park, a formalized program is created to build better educational opportunities for our communities.*



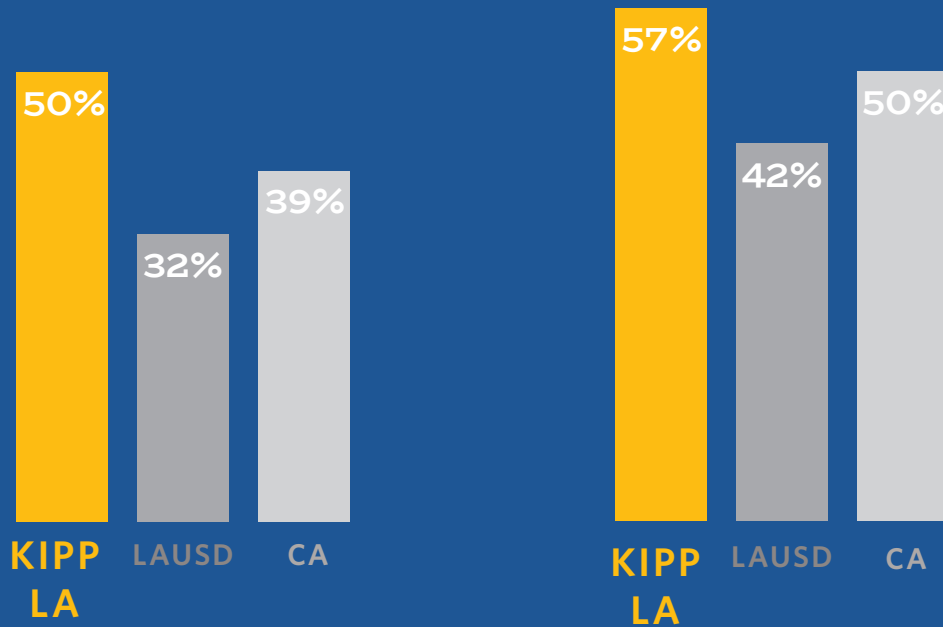
**20 SCHOOLS BY 2020**

*KIPP LA will operate 20 schools in greater Los Angeles.*

# 15 YEARS OF STRONG ACADEMICS

## 2018 CALIFORNIA ASSESSMENT OF STUDENT PERFORMANCE AND PROGRESS (CAASPP)

PERCENTAGE OF STUDENTS MEETING OR EXCEEDING MATH AND ENGLISH  
LANGUAGE ARTS STANDARDS



MATH

ENGLISH LANGUAGE ARTS



### NATIONAL BLUE RIBBON SCHOOLS AWARD IN THE EXEMPLARY HIGH PERFORMING CATEGORY

KIPP RAÍCES ACADEMY (2015), KIPP LA PREP (2016), &  
KIPP COMIENZA COMMUNITY PREP (2017)



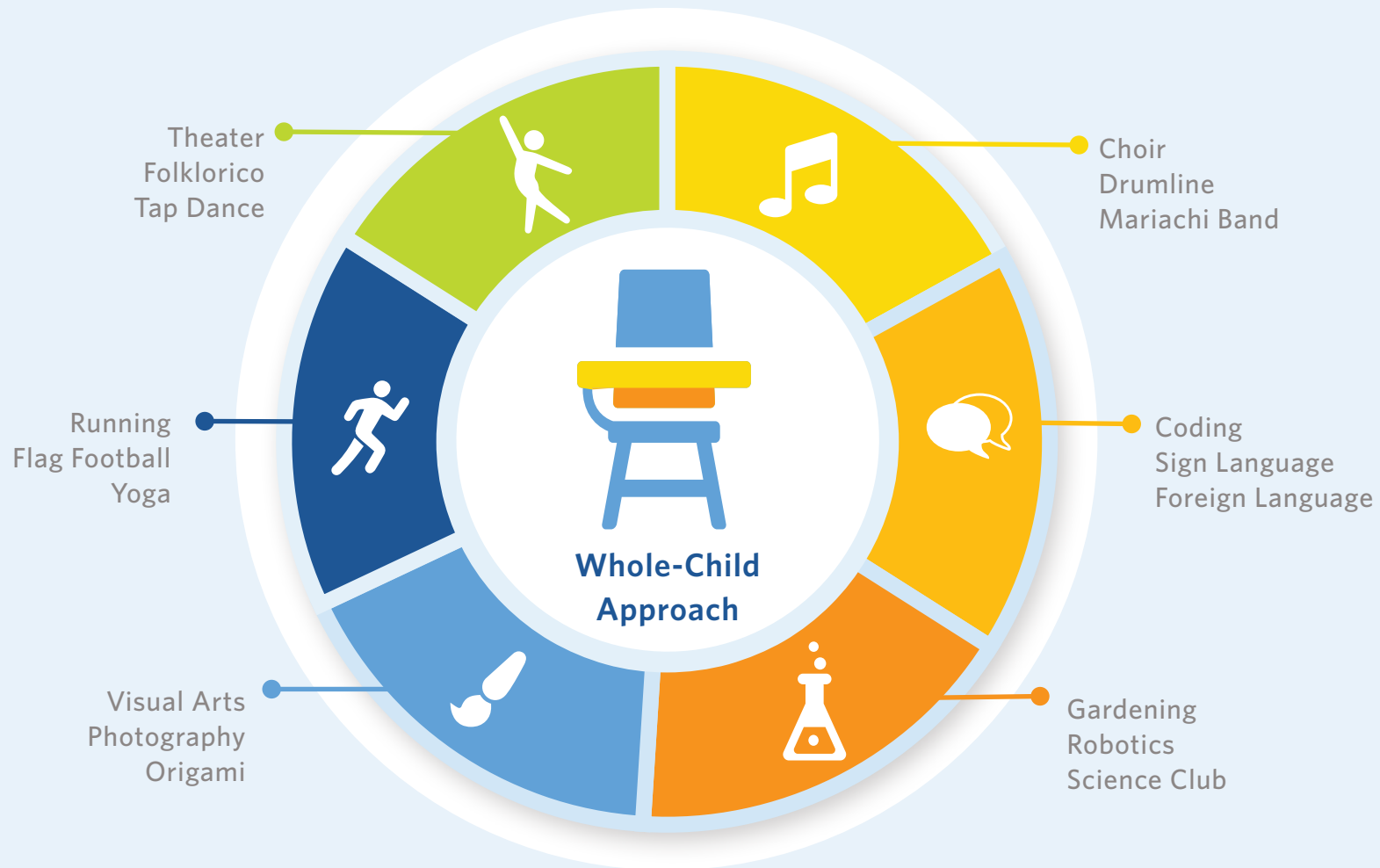
### CALIFORNIA DISTINGUISHED SCHOOLS AWARD

KIPP LA PREP (2011), KIPP ACADEMY OF OPPORTUNITY (2013)  
KIPP RAÍCES ACADEMY (2013), &  
KIPP COMIENZA COMMUNITY PREP (2018)



# WHOLE-CHILD APPROACH

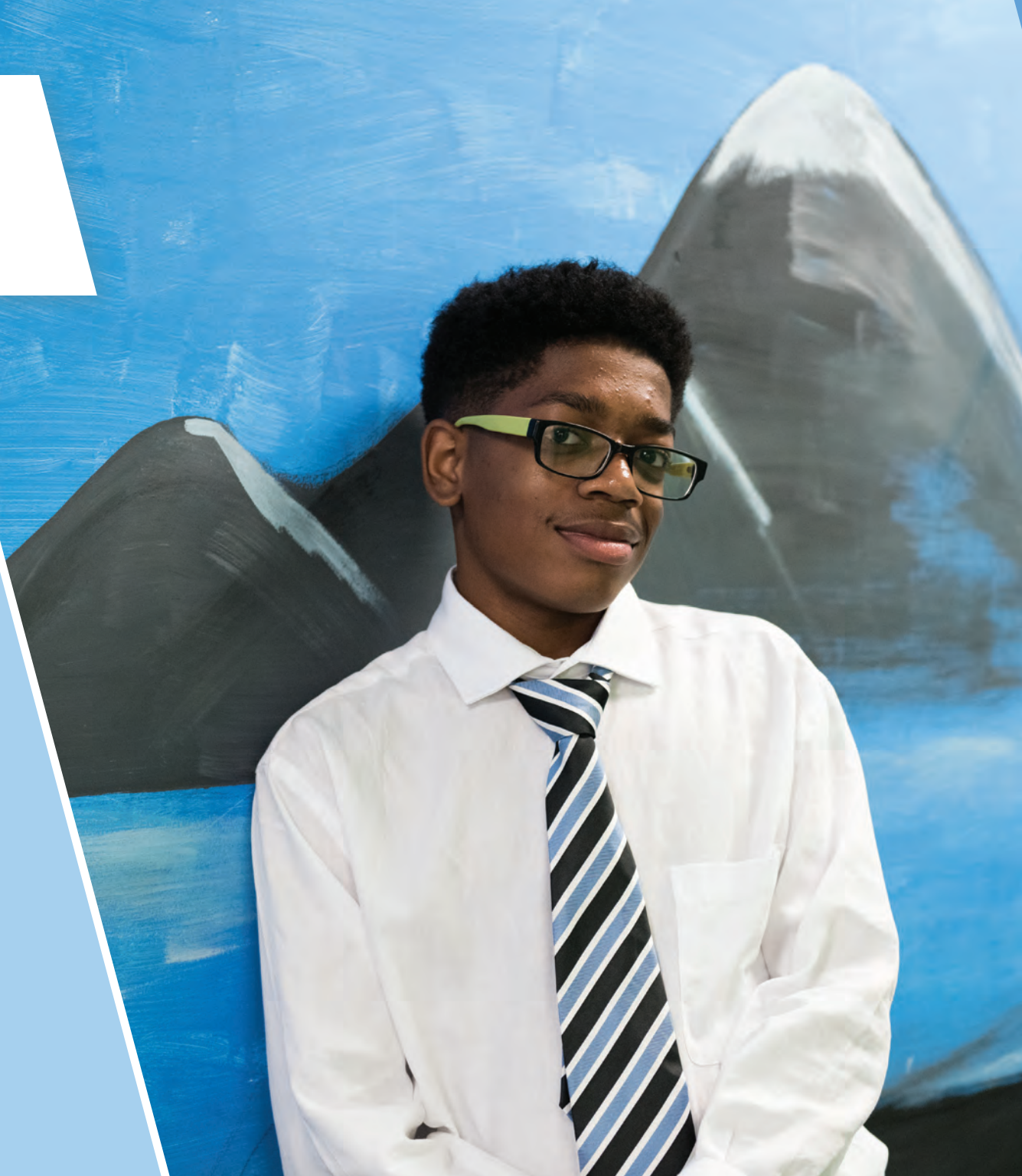
KIPP LA's whole-child approach builds on a foundation of character education in the classroom and provides opportunities for our KIPPsters to pursue activities they love to become well-rounded, thoughtful, and compassionate citizens. Included below is a sampling of the diverse activities offered to KIPP LA students.



# 15 YEARS OF STUDENTS **THRIVING**

**"With the help of his one-on-one support and his dedicated teachers, Asiah has grown tremendously at KIPP LA. When he first started, he could barely write two sentences and now he's on the Dean's List."**

ALEXIS  
ASIAH'S MOTHER



# MEETING STUDENT NEEDS

KIPP LA believes in providing personalized support that responds to our communities' realities so that all students thrive in school and life. We offer internal special education, mental health support, and other student support services to address the ever-changing needs of our students.

## CURRENT KEY SUPPORT INITIATIVES INCLUDE:



Homeless & Foster Youth



LGBTQ Youth



Trauma-Informed Classrooms



Suicide & Bullying Prevention



OF LAUSD STUDENTS  
HAVE GONE THROUGH AT  
LEAST ONE TRAUMATIC EVENT  
IN THEIR LIFE \*



OF LAUSD STUDENTS  
SUFFER FROM  
MODERATE-TO-SEVERE PTSD\*

\*Source: [www.LAUSD.net](http://www.LAUSD.net)

# 15 YEARS OF CULTIVATING **LEADERS**

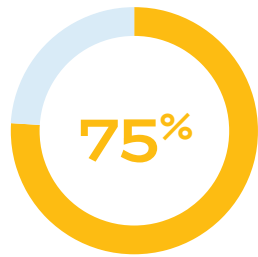
**"We have a deep desire that our schools be excellent and represent the population of the students. We want to ensure that leaders are ready when the opportunities arise, and be in a position where we can be effective."**

**TIFFANY MOORE**  
KIPP SCHOLAR ACADEMY SCHOOL LEADER  
KIPP LA BLACK WOMEN IN LEADERSHIP COHORT FOUNDER

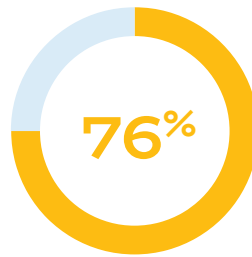


# COMMITMENT TO DIVERSITY & DEVELOPMENT

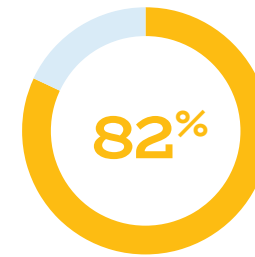
At KIPP LA, we believe in reflecting our communities and developing from within. We invest in our teachers to become future leaders through multiple efforts including nearly a month of professional development each year and credentialing support.



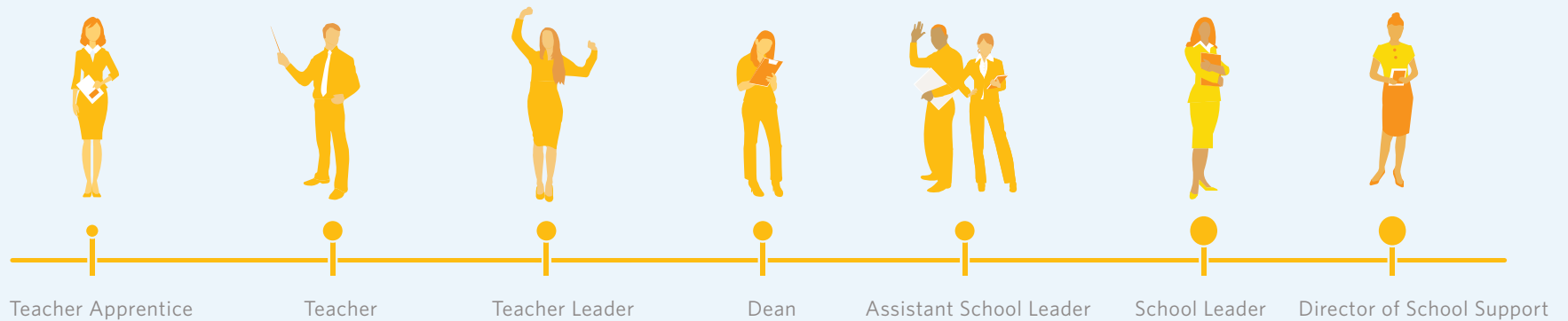
OF KIPP LA  
**SCHOOL LEADERS**  
ARE PEOPLE OF COLOR



OF KIPP LA  
**TEACHERS**  
ARE PEOPLE OF COLOR



OF KIPP LA  
**LEADERSHIP POSITIONS**  
ARE FILLED INTERNALLY



**CAREER DEVELOPMENT**

15 YEARS OF FAMILY  
**EMPOWERMENT**

**"KIPP LA schools are excellent schools because they inspire excellence not just in the students they educate, but also in the parents they partner with to advocate for our children and our communities."**

MIRNA CARDENAS  
KIPP ACADEMY OF INNOVATION  
KIPP RAÍCES ACADEMY FAMILY AMBASSADOR





# COMMUNITY ENGAGEMENT

At KIPP LA, we believe that families are an integral part of our success. Empowered families help us to expand our impact in the communities we serve. Our current focus areas include:



## CIVIC ENGAGEMENT & ADVOCACY

Family-led programming including voter registration events, immigration rights support, public policy education, and community resource fairs



## FAMILY LEADERSHIP DEVELOPMENT

The Family Ambassador Program fosters local, state, and national advocates for educational and community issues



## FAMILY ENGAGEMENT PROGRAM

Partnership with KIPP Through College providing academic tools and information, socio-emotional support, and financial literacy for college tuition to families

# 15 YEARS OF SUPPORT TO & **THROUGH COLLEGE**

**"Our family is delighted to partner with KIPP to support a new generation of students who demonstrate kindness, unflagging drive, independent thinking, and entrepreneurial spirit."**

**SHERYL SANDBERG**  
SHERYL SANDBERG & DAVE GOLDBERG FAMILY FOUNDATION  
BOARD CHAIR  
FOUNDER OF LEANIN.ORG

## FOUR KIPP LA ALUMNI RECEIVED THE PRESTIGIOUS **2018 DAVE GOLDBERG SCHOLARSHIP**



**ALEJANDRA RUELAS**  
UC BERKELEY  
FRESHMAN



**ANAID GARCIA**  
MOUNT HOLYOKE  
FRESHMAN



**GERARDO ALVAREZ**  
STANFORD UNIVERSITY  
FRESHMAN



**METZTLI GARCIA**  
UCLA  
FRESHMAN

**The Goldberg Scholarship Program** supports graduating KIPP high school seniors across the country who have demonstrated remarkable leadership and achievement. Scholars chosen from the nearly 350 applicants receive a unique combination of financial support and career development.



# KIPP THROUGH COLLEGE

The KIPP Through College (KTC) team supports KIPP LA students and alumni with individual, personalized counseling on their journeys to and through high school and college. KTC is sustained by philanthropy, and committed to ensuring students receive the customized support services needed to thrive in high school, college, and the competitive job market.



## HIGH SCHOOL PLACEMENT TEAM

In middle school, High School Placement counselors introduce KIPPsters to a variety of high school options and support them throughout the high school placement process.



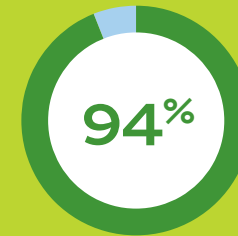
## COLLEGE MATCH TEAM

Once in high school, students are assigned a College Match counselor who supports them through the college application and matriculation process.



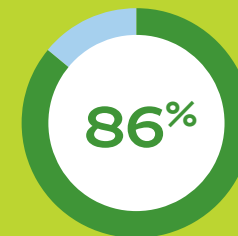
## COLLEGE SUCCESS TEAM

Once alumni are in college, College Success counselors provide extensive support to ensure our alumni persist on the path to college graduation, internships, and careers.



OF KIPP LA 8TH GRADE ALUMNI  
**GRADUATED FROM  
HIGH SCHOOL**

NATIONAL LOW-INCOME STUDENT  
AVERAGE IS 76%



OF KIPP LA 8TH GRADE ALUMNI  
**MATRICULATED  
TO COLLEGE**

NATIONAL LOW-INCOME STUDENT  
AVERAGE IS 46%

# 15 YEARS OF SUPPORTING **OUR FUTURE**

**"KIPP LA taught me to think beyond the classroom so we can be the generation that changes us for the better."**

**ANGEL CARRASCO**  
KIPP RAÍCES & SOL ACADEMY ALUMNUS  
THE THACHER SCHOOL, SOPHOMORE

"The value of grit that I learned at KIPP LA helped me remain persistent in college and will be used in my professional career. I envision to one day be a health professional in underserved communities for families who come from the same neighborhoods as me."

**ERIKA MEY**

KIPP LA PREP ALUMNA  
UC IRVINE GRADUATE  
CEDAR FOUNDATION SCHOLAR  
KIPP FEDERAL POLICY FELLOWSHIP INTERN

*Angel was in the first class of students to attend KIPP LA from kinder to eighth grade.*



"It's difficult to navigate where to begin a career. KIPP LA provided me with internship opportunities that allowed me to build my skills, make professional connections, gain confidence, and explore future career paths, which ultimately led me to Wells Fargo."

**VANESSA SALOMON**

KIPP LA PREP ALUMNA

MILLS COLLEGE GRADUATE

QUEST FOUNDATION SCHOLAR

CEDAR FOUNDATION SCHOLAR

WELLS FARGO FINANCIAL ANALYST



# INVESTING IN GREATER IMPACT

**"KIPP Compton Community School is grounded in the fundamental belief that all people have the power to positively impact the lives of others. I want to partner with the community of Compton to continue developing a positive narrative based on social justice, opportunity, and joy."**

**DR. LEANNA MAJORS**  
KIPP COMPTON COMMUNITY SCHOOL  
FOUNDING SCHOOL LEADER



# RETURN ON INVESTMENT

KIPP LA analysis shows that a college degree not only offers students choice-filled lives, but positively impacts economies and communities for the greater good.

COMPARED TO HIGH SCHOOL GRADUATES, PEOPLE WITH A BACHELOR'S DEGREE ARE MORE LIKELY TO:



**EARN \$765,000 MORE**  
OVER THEIR LIFETIME



**VOLUNTEER**



**VOTE**

## PUBLIC FUNDING COMPARISON

Average per pupil public funding in 2016-17\*

|                      |          |
|----------------------|----------|
| District of Columbia | \$36,702 |
| New York             | \$25,446 |
| New Jersey           | \$22,101 |
| Massachusetts        | \$18,981 |
| California           | \$10,439 |

*\*Data from the National Education Association.  
Includes state and federal funding*

## KIPP LA'S PER STUDENT INVESTMENT



- Public Funding: 85%
- Philanthropic Funding: 15%

## KIPP LA'S EXPENDITURES



- School-Based Personnel: 50%
- Operational Expenses: 19%
- School Success Team Personnel: 13%
- Supplies & Materials: 10%
- Facilities: 8%

THANK YOU TO OUR PARTNERS AT  
**BAIN & COMPANY**



*Bain & Company Volunteer Day at KIPP Raíces Academy.*

# KEY STRATEGIC FOCUS AREAS

For the past two years, KIPP LA has had the opportunity to partner with Bain & Company on two major pro-bono projects:



## BEYOND 20 GROWTH PLAN

In-depth growth planning support for KIPP LA's vision beyond 2020.



## ESTIMATED COLLEGE COMPLETION UPLIFT

Improve college matriculation and completion.

## CURRENT INITIATIVES

Our goal is to ultimately raise the quality of education in Los Angeles. There are nearly 950,000 students across Southern California attending low-performing schools. To achieve this level of impact we will focus on six main areas:

- 1.** Create a KIPP LA School Leader Fellowship Program to identify, select, and train prospective successor leaders.
- 2.** Grow teacher and support teams to ensure KIPP LA has the necessary capabilities and processes to effectively scale.
- 3.** Secure the funds required for building and operating new schools.
- 4.** Advance our advocacy work to engage key stakeholders in prospective communities.
- 5.** Develop a Teacher Residency Program to establish a pathway for motivated individuals to become certified teachers.
- 6.** Expand the KIPP Through College team to accelerate alumni success.

# KIPP LA GIVES **GRATITUDE**

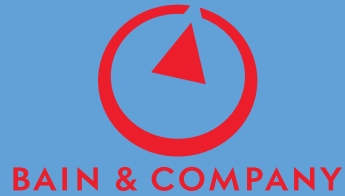
**"For 10 years, we have had front row seats to KIPP's meteoric growth and transformative impact on LA for students, leaders, teachers, families and communities. In that time, KIPP LA has grown from 2 to 17 powerhouse schools, and will achieve its goal of 20 schools by 2020. It has been our honor and privilege to support KIPP LA."**

**MARTHA & BRUCE KARSH**  
CHAMPION SUPPORTERS OF KIPP LA PUBLIC SCHOOLS





## CORPORATE PARTNERS



## FOUNDATION PARTNERS

The Eli & Edythe Broad Foundation

Charter School Growth Fund

Ballmer Group

Otis Booth Foundation

CEDAR Foundation

Doris & Donald Fisher Fund

Great Public Schools Now

W.M. Keck Foundation

Arthur Rock & Toni Rembe Elementary  
School Growth Fund

The Walton Family Foundation

Windsong Trust

Sam Simon Giving Charitable Foundation

*Our current and future success and growth is largely dependent on philanthropic support. We are grateful for all those who make our work possible.*

## BOARD OF DIRECTORS

### **Frank Reddick, Chair**

Partner, Akin Gump Strauss Hauer & Feld LLP

### **Margaret Armona**

Entrepreneur and Philanthropist

### **Carlos Bermudez**

Partner, Akin Gump Strauss Hauer & Feld LLP

### **Randy Bishop**

President, ContractSafe LLC

### **Mel Carlisle**

Managing Partner and CFO of Oaktree Speciality Lending, Oaktree Capital Management

### **Philip Feder**

Partner, Paul Hastings LLP

### **Josh Goldin**

Co-founder & Managing Partner, Alliance Consumer Growth ACG

### **Lynn Jacobson**

Advisory Board of Teach for America, Los Angeles

### **E.J. Kavounas**

Managing Partner & Founder, Miramac Capital

### **Heather Lord**

SVP, Head of Strategy & Innovation, American Funds, Capital Group

### **Julie Miller**

Partner, Holthouse Carlin & Van Trigt LLP

### **Norma Parraz**

Founder and CEO, EduconX LLC

### **Luis Rodriguez**

Attorney, Office of Los Angeles County Public Defender

## TRUSTEES

### **Martha Karsh, Chair**

Attorney; Co-Founder, Clark & Karsh

### **Marcus Allen**

NFL Hall-of-Famer

### **Erika Glazer**

Activist & Philanthropist

### **Cassandra H. Grey**

Brand Consultant & Entrepreneur

### **Nancy Marks**

Portrait Artist & Author

### **Don McCammack**

Retired; Former President, Avis Rent-a-Car

### **Palmer Murray**

President & Co-Managing Partner, Lourd Capital Management

### **Chet Pipkin**

Chairman of the Board, Belkin International, Inc.

### **Blair H. Taylor**

CEO, My Brother's Keeper Alliance

## ASSOCIATES BOARD

### **Alicia Alonso, Co-Chair**

Executive Assistant and Estate Manager, Karsh Family

### **Shadie Shafii, Co-Chair**

Senior Manager, General Assembly

### **Iman Nanji, Secretary**

Bohnett Fellow, Mayor's Office of Budget and Innovation

### **Ryne Posey, Events Chair**

Labor and Employment Attorney, Skadden, Arps, Slate, Meagher & Flom LLP

### **Jasmine Butler**

Relationship Manager, Wells Fargo

### **Ashley Berk**

Associate, O'Melveny & Myers LLP

### **Alexandre Dauman**

Film and TV Producer

### **Ellen Etten**

Comedy Writer & Performer

### **Bailey Masullo**

Portfolio Results Analyst, Capital Group

### **Abigail Pontzer**

Pacif Charter School Development

### **Dan Reichert**

Senior Risk & Insurance Analyst, Capital Group

### **Jack Rosenberg**

Vice President, One Rock Capital Partners

### **Evan Schlossberg**

Consultant, Bain & Company

### **John Sigmon**

Portfolio Analyst, Capital Group

### **Priscyla Temblador**

Warehouse Operations Manager, McMaster-Carr

### **Cesar Vasquez**

Residential & Commercial Agent, KASE Group

### **Andrew Weisberg**

Litigation Associate, O'Melveny & Myers LLP

### **Bo Wen**

Assistant Vice President, Oaktree Capital Management

### **Stacy Yamazaki**

Project Manager, Fandango

# CHAMPION SUPPORTERS HALL OF FAME<sup>★</sup>

KIPP LA Public Schools is pleased to honor our Champion Supporters who have been instrumental in driving our growth since 2008.

## \$25,000,000 OR MORE

Martha & Bruce Karsh

## \$15,000,000 OR MORE

The Eli & Edythe Broad Foundation

## \$5,000,000 OR MORE

Charter School Growth Fund  
Nancy & Howard Marks

## \$1,000,000 OR MORE

Ballmer Group  
Otis Booth Foundation  
CEDAR Foundation  
Doris & Donald Fisher Fund  
John Frank & Diann Kim  
Great Public Schools Now

W.M. Keck Foundation  
The KIPP Foundation  
The Arthur Rock & Toni Rembe  
Elementary School Growth Fund  
Patty & Michael Rosenfeld  
Moira & Rajath Shourie  
The Walton Family Foundation  
Jean & Lew Wolff

## \$500,000 OR MORE

Anonymous  
Margaret M. Bloomfield Family  
Foundation  
Leslie & Steve Carlson  
Bill & Melinda Gates Foundation  
Eileen & Robert O'Leary  
The Ralph M. Parsons Foundation

Windsong Trust

## \$250,000 OR MORE

Marcia Aaron  
The Ahmanson Foundation  
John Brady  
Michael & Susan Dell Foundation  
Joseph Drown Foundation  
ExED  
Erika J. Glazer Family Foundation  
The Goldhirsh Foundation  
Sarajane & Zac Guevara  
Jaquelin Hume Foundation  
Lynn & Craig Jacobson  
McCammack Family Foundation  
Nancy & Bruce Newberg  
Quest Foundation

RGK Foundation  
Sam Simon Charitable Giving  
Foundation  
Weingart Foundation  
Wells Fargo Foundation

## \$100,000 OR MORE

Akin, Gump, Strauss, Hauer & Feld LLP  
All Stars Helping Kids | Marcus Allen  
Annenberg Foundation  
Kristen & Loren Bendele  
Canyon Partners | Beth & Josh  
Friedman  
John W. Carson Foundation  
Delta Air Lines  
The Eisner Foundation  
Farmers Insurance

The Green Foundation  
Cassandra & Brad Grey  
The Mayer & Morris Kaplan Family  
Foundation  
Susan & Scott Lord  
Betsy McLaughlin  
Marlene & Sandy Louchheim  
Alicia Miñana & Robert Lovelace  
The Morgridge Family Foundation  
Murmuration, Inc.  
The Palermo-Ravich Foundation  
Jan & Chet Pipkin  
Julie Kaufer & Frank Reddick  
The Riordan Foundation  
Tory & Cameron Strang  
Tacori

\* Reflects gifts and pledges made to KIPP LA Public Schools from 2008 to present.

## THANK YOU TO OUR ANNUAL DONORS WHO MAKE OUR WORK POSSIBLE EVERY DAY.\*\*

### \$4,000,000 OR MORE

Martha & Bruce Karsh

### \$1,000,000 OR MORE

The Eli & Edythe Broad Foundation  
John Frank & Diann Kim  
Great Public Schools Now  
W.M. Keck Foundation  
Jean & Lew Wolff

### \$500,000 OR MORE

Ballmer Group  
Charter School Growth Fund

### \$100,000 OR MORE

Margaret M. Bloomfield Family  
Foundation  
Otis Booth Foundation  
John Brady  
CEDAR Foundation

Doris & Donald Fisher Fund  
Alicia Miñana & Robert Lovelace  
Arthur Rock & Toni Rembe  
Elementary School Growth Fund  
Patty & Michael Rosenfeld  
Moira & Raj Shourie  
Sam Simon Giving Charitable  
Foundation  
The Walton Family Foundation  
Windsong Trust

### \$50,000 OR MORE

Joseph Drown Foundation  
The Green Foundation  
Sarajane & Zac Guevara  
Lynn & Craig Jacobson

### \$25,000 OR MORE

Kristen & Loren Bendele  
Capital Group

Delta Air Lines  
Judy & Arnold Fishman  
McCammack Family Foundation  
Murmuration, Inc.  
The Palermo-Ravich Family  
Foundation  
Skadden, Arps, Slate, Meagher &  
Flom LLP  
Wells Fargo Foundation

### \$10,000 OR MORE

Marcia Aaron  
Dargetta & Mel Carlisle  
Leslie & Steve Carlson  
Falconhead Charitable Foundation  
| In honor of Rachelle Minix  
Mary Ann & Kip Hagopian  
Jean & Stephen Kaplan | In  
honor of Martha & Bruce Karsh  
Jacki & Jeffrey Karsh  
Chung Han & E.J. Kavounas

Richard & Suzanne Kayne  
Susan & Scott Lord  
Marlene & Sandy Louchheim  
The Susan Scott Foundation  
Julie Miller & Marc Binenfeld  
Project Lead the Way, Inc.  
Quest Foundation  
Julie Kaufer & Frank Reddick  
Maxine & Gene Rosenfeld  
Trevecca & James Terrile

### \$5,000 OR MORE

Buck Financial Advisors  
Jessica Curtner & Kyle Maclaren  
Miller  
Cindy & Philip Feder | In honor of  
Martha Karsh and Julie Miller  
Franco Architects, Inc.  
Elizabeth & Adam Gibbons  
Sandra & Bart Gurewitz  
Betsy McLaughlin

State Bank of India  
Wendy & Jay Wintrob

### \$1,000 OR MORE

Renate & Stephen A'Hearn  
Anonymous  
Robert W. Baird & Co.  
Baird Foundation, Inc.  
Barclay Perry  
Jose L. Barragan  
Bonnie Barnes  
Kendall & Diane Bishop  
Meghan & Randy Bishop  
Adam Bloch  
James Booth  
Jasmine Butler  
CliftonLarsonAllen LLP  
Philippe & Deborah Dauman  
Dedicated Building Services  
Donald Gilman | In honor of  
Marlene Louchheim

First Republic Bank  
Terry & Todd Gilman  
Jessica & Josh Goldin  
Greystone & Co.  
Richard Hofmann  
Dale Holzer | In honor of Rachelle  
Minix  
Nathan Howard  
Diane Huffman  
I Am Other Ventures, LLC  
Jennifer & Aaron Kabaker  
The KIPP Foundation  
Joan Velazquez & Joel Kozberg  
| In honor of Martha & Bruce Karsh  
Sybil Lubin | In honor of Martha &  
Bruce Karsh  
Carey Nachenberg  
O'Melveny & Myers LLP  
Susan & Gary Polson  
Rally  
Ann & Jeremy Rogers

William Izaac Rothbard  
RSM US LLP  
Shadie Shafii & Saul Flores  
Linda Kohn Sherwood | In Honor of  
Moira Shourie  
Sarina Simon & William Skinner  
William Sloane Jelin Foundation  
Bill Wood  
Michael Wright  
Carl E. Wynn Foundation

\*\*Reflects donations made  
between July 1, 2017 and  
June 30, 2018.

View complete list of KIPP LA Public Schools donors at [www.kippla.org/supporters](http://www.kippla.org/supporters)



**KIPP:LA**  
PUBLIC SCHOOLS

3601 East First Street, Los Angeles, CA 90063

[www.kippla.org](http://www.kippla.org) | [f](#) [t](#) [KIPPLASchools](#) [@KIPPLAPublicSchools](#)